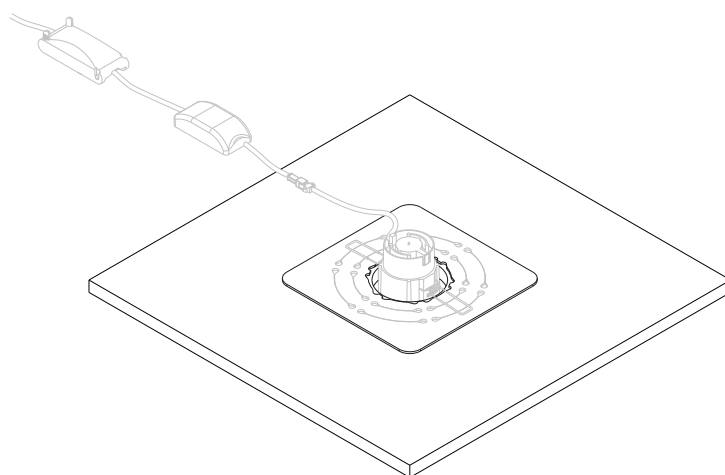
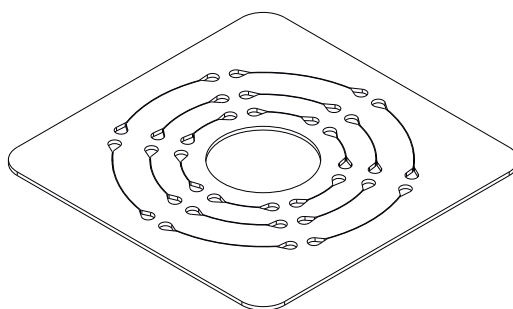


Installation manual Plaat-O mounting plate



1. Introduction

This manual provides the important and necessary information about the installation of the Plaat-O mounting plate.



Read the manual carefully so that you are familiar with the entire contents. Follow the instructions in the manual carefully. Always perform the tasks in the correct order.

This manual needs to be stored in a safe, dry and shadowy place. If the manual is lost, a new copy can be requested from Tale Solutions.

2. Safety

2.1 Safety measures and warnings

Important notes:



When using electrical devices, all safety rules need to be taken into account to prevent the risk of fire, electric shock or bodily injury, etc.

Please read the safety warnings and precautions before installing and use the Plaat-O.

- Follow the instructions and guidelines described in this manual carefully during installation. Do not alter the prescribed order of installation steps. If any aspect of the installation process is unclear, please contact Tale Solutions or its authorised representative. Subject to technical changes, without written notification.
- Keep to the applicable standards and legal regulations while installing.
- Installation should only be carried out by a qualified technician / recognised installers.
- The electrical system must be completely disconnected from any power connection / mains before carrying out installation work!
- Ignoring installation instructions or environmental conditions may result in electrical hazards.
- Check the supply immediately after receipt. We request you to contact your supplier immediately in case of damage or incomplete supply.
- The materials need to be stored in a dry, ventilated space, not exposed to direct sunlight.
- Open the package carefully. Ensure that you do not damage the product.
- To prevent damage to the Plaat-O mounting plate, place the mounting plate on a soft, clean and flat surface.
- **CAUTION! The Plaat-O mounting plate is only suitable for LED luminaires** (max. surface temperature 80° C.)
- **CAUTION! The Plaat-O mounting plate is not suitable for halogen or incandescent lamps.**
- **CAUTION! The installer is responsible for using a suitable luminaire.**
- The Plaat-O mounting plate is only intended for application in a well-ventilated space.
- The Plaat-O mounting plate is for indoor use in dry rooms only.
- No open flames or heat sources in the area.
- Mount the Plaat-O on a flat, fire-proof/heat-resistant ceiling tile. Ensure that the surface is clean and dry and level.
- The Plaat-O mounting plate has a permissible load of maximally 850 grams.

2.1 Safety measures and warnings (continued)

- Only use side cut pliers and never a knife!
- Adding or removing parts other than in the prescribed manner, may have a negative influence on the safety of the Plaat-O and is thus to be strongly discouraged.
- Optional for strain relief: Place a cable tie through the recesses in the mounting plate before fitting the lamp. Tighten the cable tie around the cable to provide strain relief.

2.2 Required personal protective equipment

Always wear the required personal protective equipment when carrying out work.

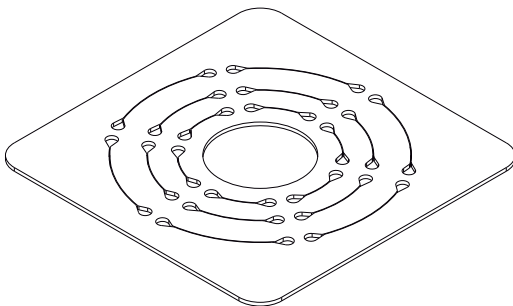


Safety gloves required.



Eye protection required.

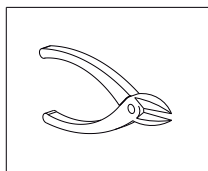
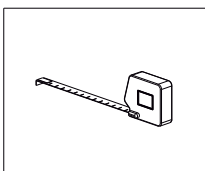
3. Product overview



Plaat-O mounting plate.

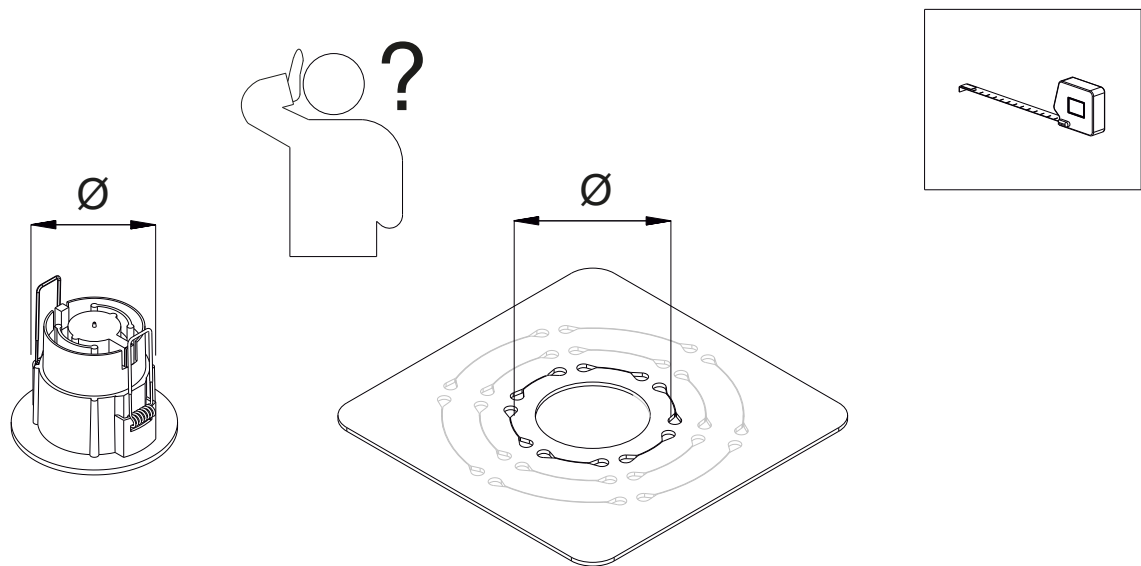
4. Overview of tools

Below you will find an overview of the required tools.



5. Installation steps

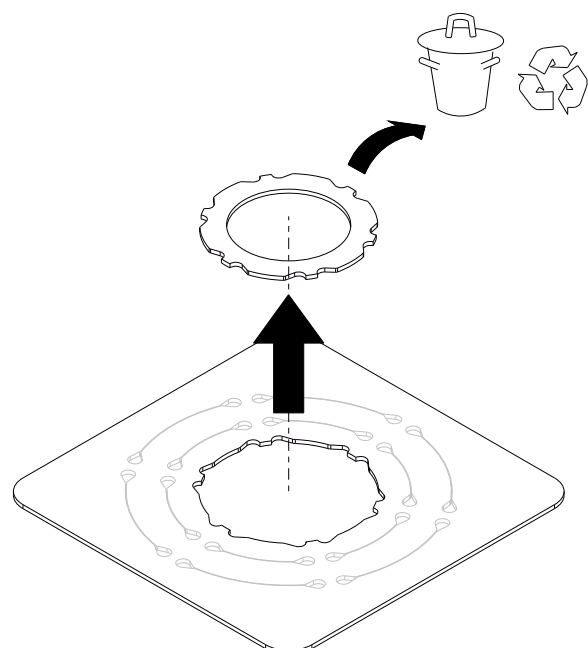
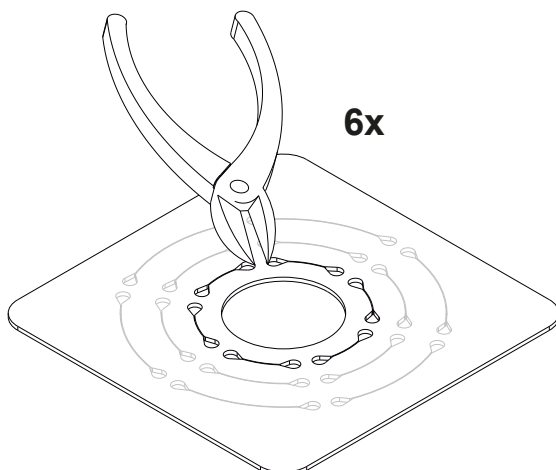
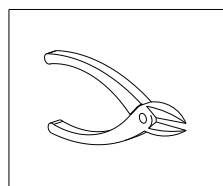
- 1** Determine the required hole diameter in the Plaat-O based on the spotlight or downlighter.



- 2** Cut the Plaat-O to size, using side cut pliers to cut away the bridges from mounting plate.



CAUTION! Use safety gloves and eye protection while cutting the bridges from the mounting plate.
CAUTION! Only use side cut pliers and never a knife!



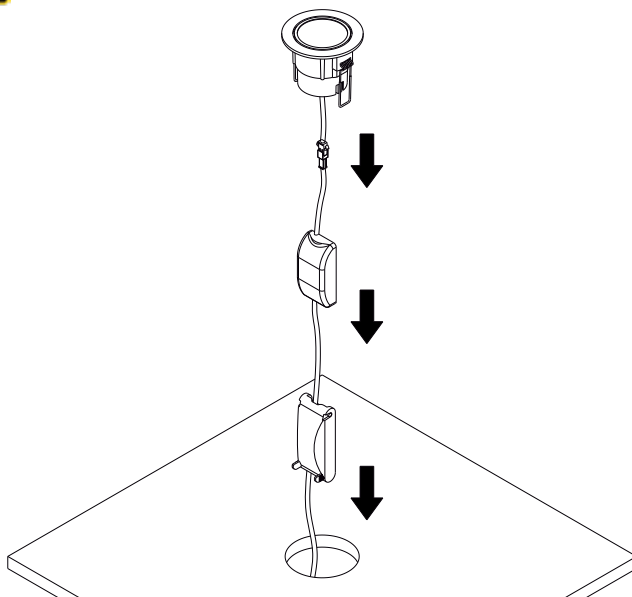
- 3** Put the cord, adapter and spotlight or downlighter through the hole in the ceiling plate.



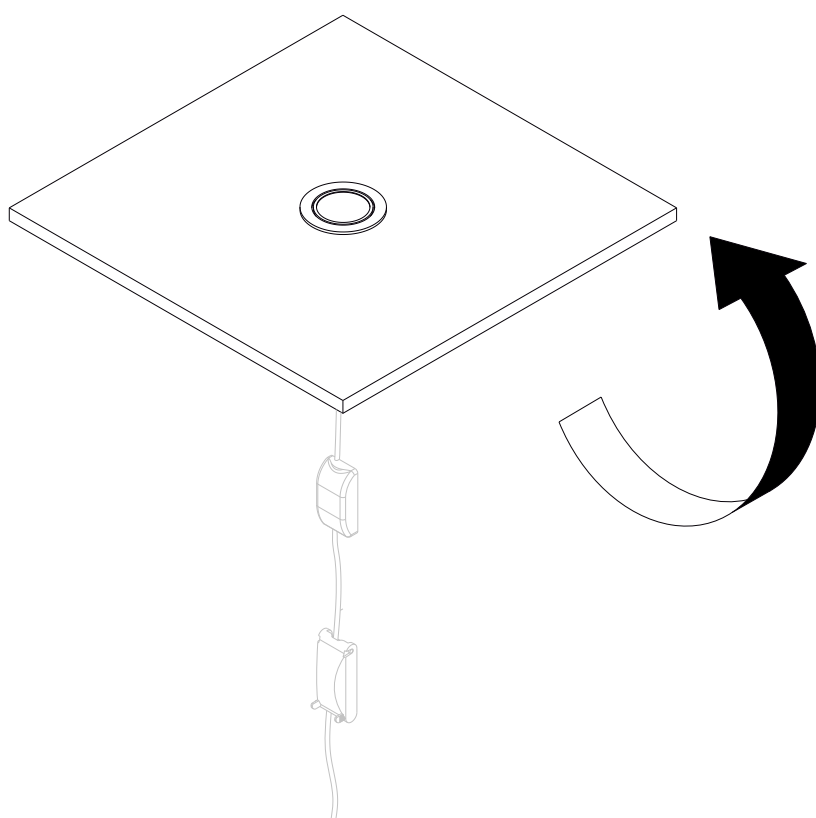
The electrical system must be completely disconnected from any power connection / mains before carrying out installation work!



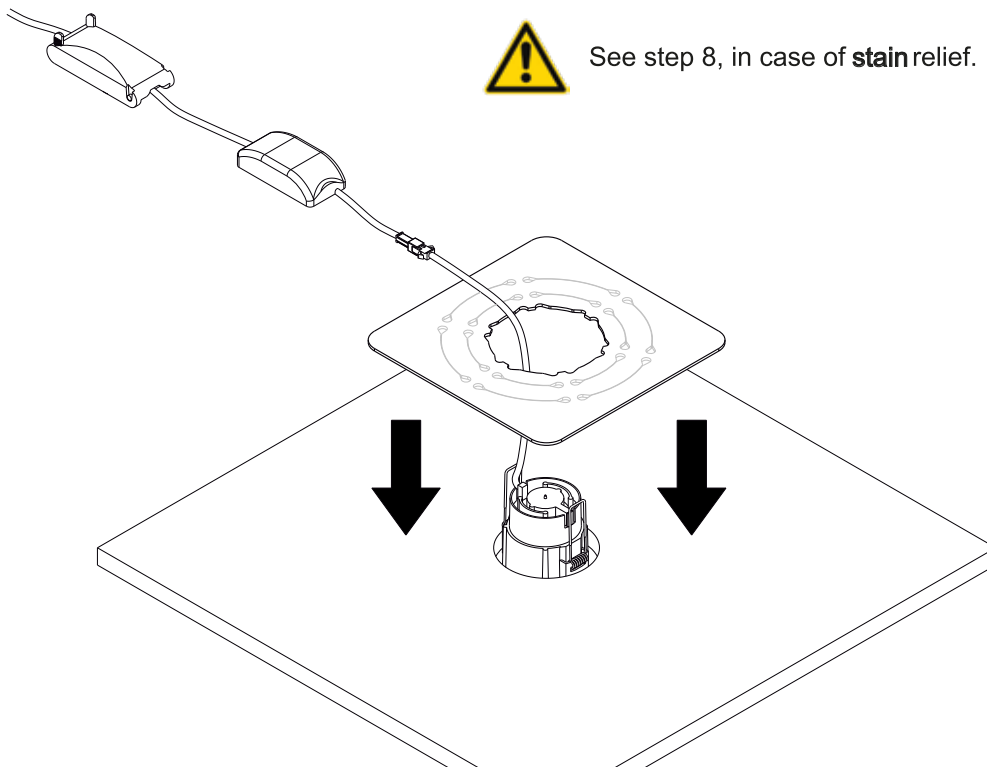
Failure to observe the installation instructions and environmental conditions may lead to dangerous situations during work with electricity.



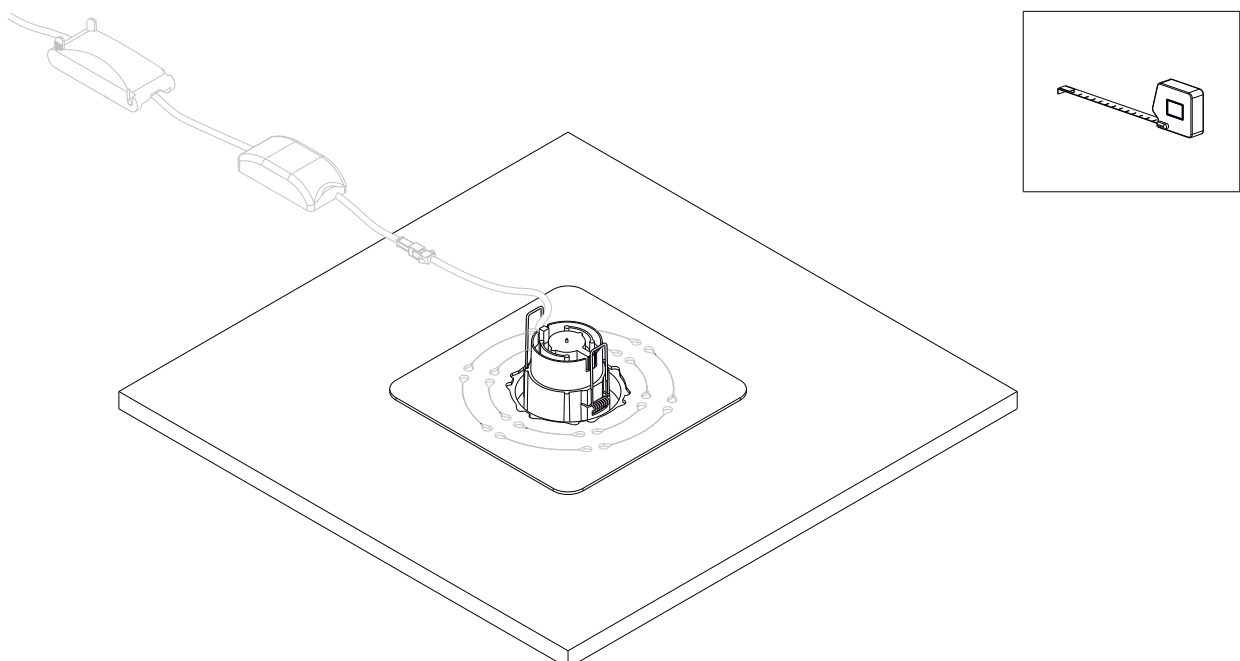
- 4** Turn over the ceiling plate including cord, adapter and spotlight or downlighter



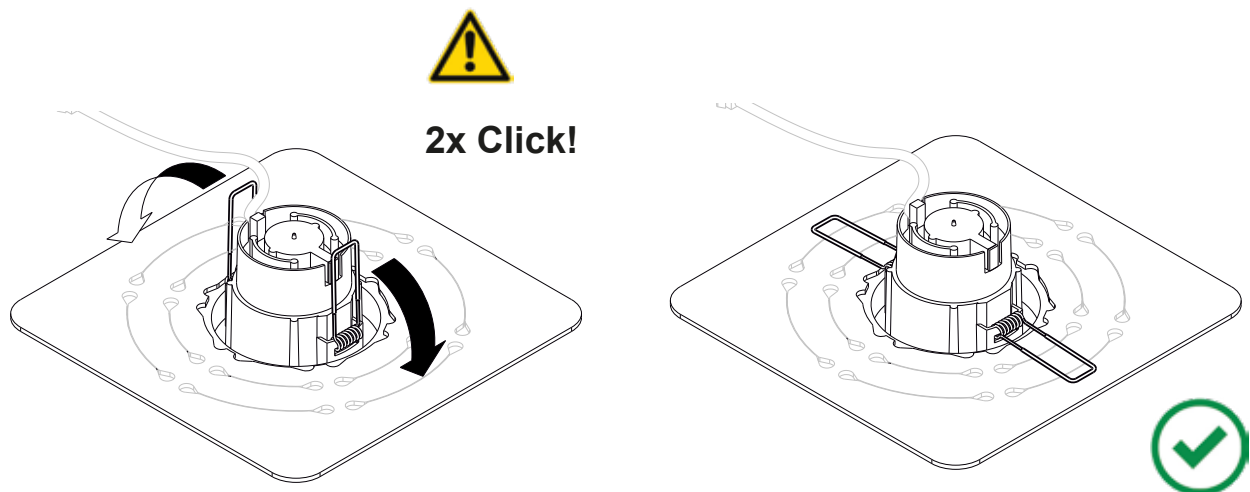
- 5** Place the Plaat-O over the cord, adapter, spotlight or downlighter on ceiling plate.



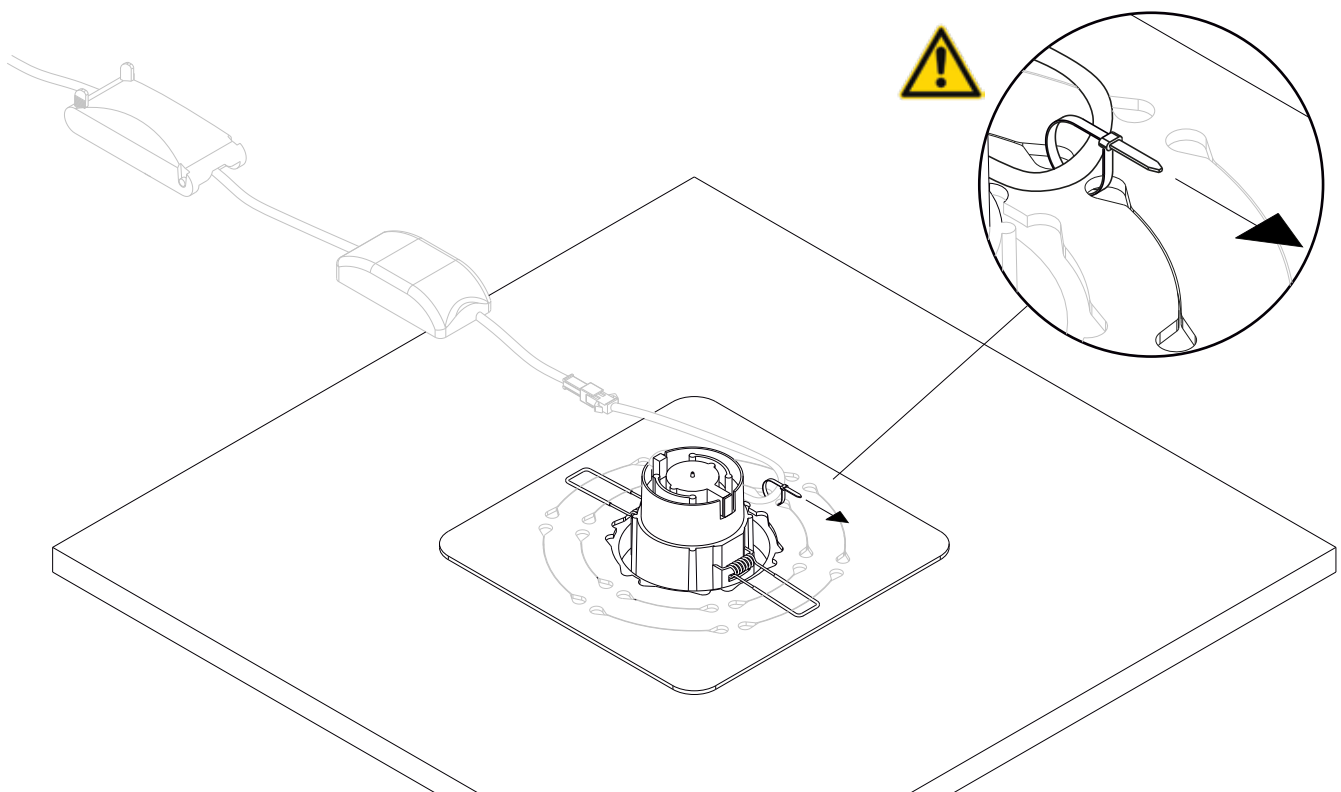
- 6** Align the Plaat-O straight with ceiling plate.



- 7** Clamp the clamping spring of the spotlight or downlighter onto the Plaat-O.



- 8** Optional for stain relief: Place a cable tie through the recesses in the mounting plate before fitting the lamp. Tighten the cable tie around the cable to provide strain relief.



6. Environment & Waste disposal

Remove the packaging materials of the Plaat-O mounting plate in accordance with local laws and regulations.



Dispose of all packaging materials in an environmentally friendly manner.

The cardboard of the Plaat-O mounting plate is recyclable and can go into a standard cardboard and paper waste bin.

7. Warranty

5-year product warranty. We also refer to our General Terms and Conditions of Sale and Delivery, which are available on request.

8. Contact



Tale Solutions BV

Marconistraat 19a
6716 AK Ede

Phone: +31 (0)318 74 50 32

Email: info@talesolutions.com

Web: www.talesolutions.com

Disclaimer

Tale Solutions rejects any responsibility for damage or injury resulting from failure to carefully follow this manual and failure to observe customary caution during transport, installation and use of the Plaat-O mounting plate. Due to continuous improvement efforts, the product may differ in detail from what is described in this manual. For that reason, the instructions given here merely serve as a guideline for the installation and use of the equipment specified in this manual. The greatest possible care has been taken in compiling this manual, but Tale Solutions cannot be held liable for any errors contained therein or the consequences thereof.